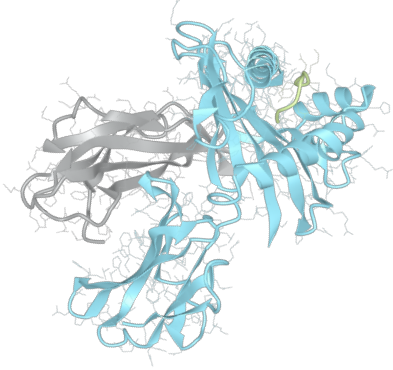


Product datasheet



sHLA-C*03:03bio

Cw*03:03, Cw*0303, C*0303, C0303
Cw0303, C*03, C03, Cw*03, Cw03, Cw9

Serological Name	Cw9
Peptide Load	Endogenous
Modification	Unmodified
Conjugation	Biotin
SKU	C0303bio

Product Description

Allele Name	C*03:03 B2m
HLA Class	HLA Class I
HLA Gene Locus	HLA-C
Alternative Allele Name A Chain	Cw*03:03, Cw*0303, C*0303, C0303, Cw0303, C*03, C03, Cw*03, Cw03, Cw9
Alternative Allele Name B Chain	-
Description	Recombinant, truncated Class I soluble Human Leukocyte Antigen (sHLA), naturally folded and glycosylated, loaded with endogenous peptides.
Serological Name	Cw9
Serological Split	Cw3
Bw4/Bw6 Assignment	Bw6
Bw4/Bw6 Sequence	SLRNLRG
Allele Frequency [World Population]	
A chain	4.2%
B chain	-

Associated products

[C0303](#)
[C0303pe](#)

Product Specification

Product name	HLA-C*03:03bio
HLA Species	Human
Host Cell Line Species	Human
Clone Designation	D10
Tail Specification	VLDL
Peptide Load	Endogenous
Modification	Unmodified
Conjugation	Biotin
Complexity	Monomer
Protein Format	Recombinant, truncated, soluble, non-modified, biotinylated, endogenously loaded
Storage Temperature	4 °C (This product should be stored undiluted)
Form	Liquid
Concentration	300.0 µg/µl
Formulation	PBS/0.02% Sodium Azide
pH	7.4
Purification Method	Affinity Chromatography
Grade	Research Use Only [RUO]
Authentication Verification	Sequence Based Typing

Protein Sequences

Alpha Chain Sequence	GSHSMRYFYT AVSRPGRGEP HFIAVGYVDD TQFVRFSDSA ASPRGEPRAP WVEQEGPEYW DRETQKYKRQ AQTDRVSLRN LRGYYNQSEA RSHIIQRMYG CDVGPDRLL RGYDQYAYDG KDYIALNEDL RSWTAADTAA QITQRKWEAA REAEQLRAYL EGLCWEVLRRL YLKNKQKQTLQ RAEHPKTHVT HHPVSDHEAT LRCWALGFYP AEITLTWQWD GEDQTQDTEL VETRPAGDGT FQKWAAVVVP SGEEQRYTCH VQHEGLPEPL TLRVSVSTDD DLA
Beta Chain Sequence	IQRTPKIQVY SRHPAENGKS NFLNCYVSGF HPSDIEVDLL KNGERIEKVE HSDLSFSKDW SFYLLYYTEF TPTEKDEYAC RVNHVTLSPQ KIVKWDRDM

Related Products

[C0302bio](#)
[C0304bio](#)
[A0201bio](#)
[B0702bio](#)

Applications

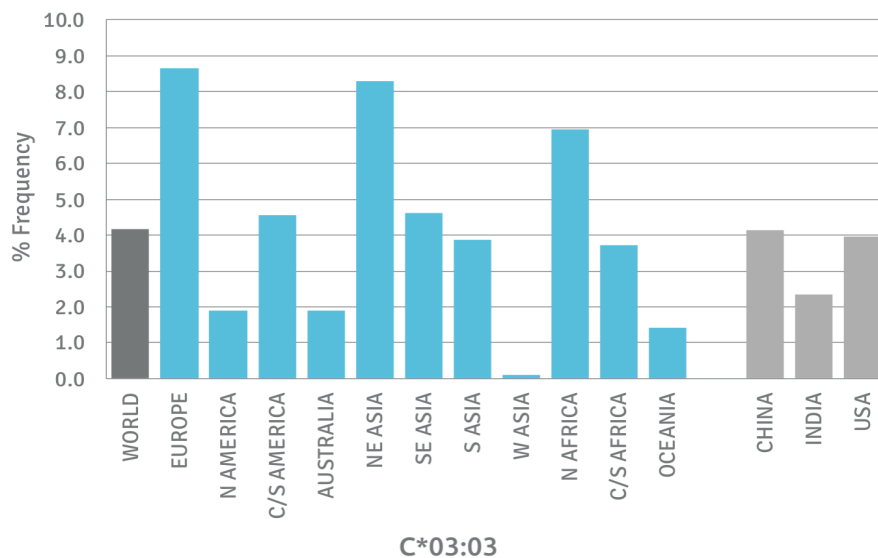
- HLA Sandwich ELISAs
- HLA Direct ELISAs
- HLA-Sera Antibody Assays
- HLA Controls in ELISA Assays
- HLA Assay Standards
- HLA Blocking Assays
- HLA Neutralizing Assays
- HLA Competition Assays
- HLA Bead Assays
- HLA Immunization Procedures

Recommended Antibodies

- W6/32
- Anti-B2m

Allele Frequency

Worldwide Allele Frequency



Please note:

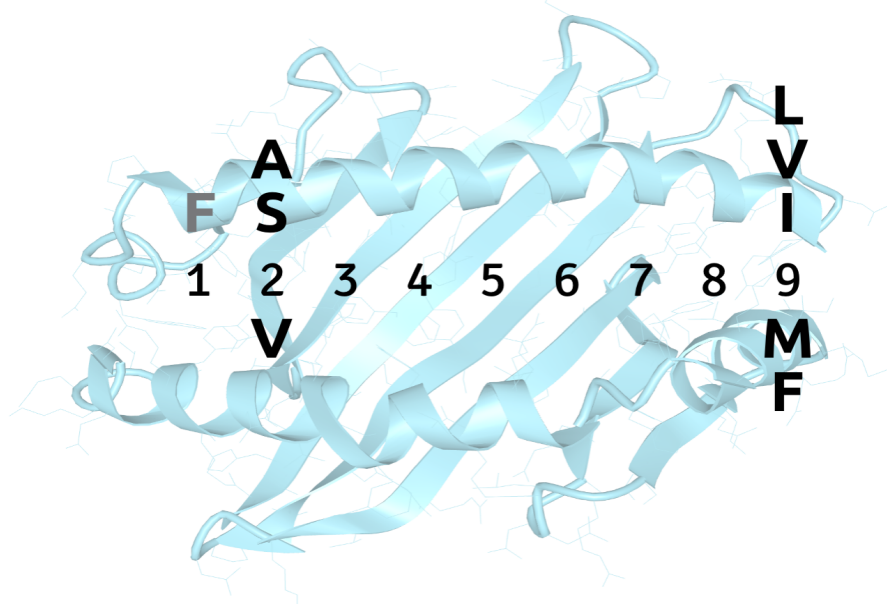
ALL PRODUCTS ARE FOR RESEARCH USE ONLY. NOT FOR COMMERCIAL USE IN DIAGNOSTIC PROCEDURES.
For more information, please visit our Policies section on our website. For licensing inquiries, please contact

licensing@hlaprotein.com

 HLA Protein
PURE PROTEIN, LLC

Motif

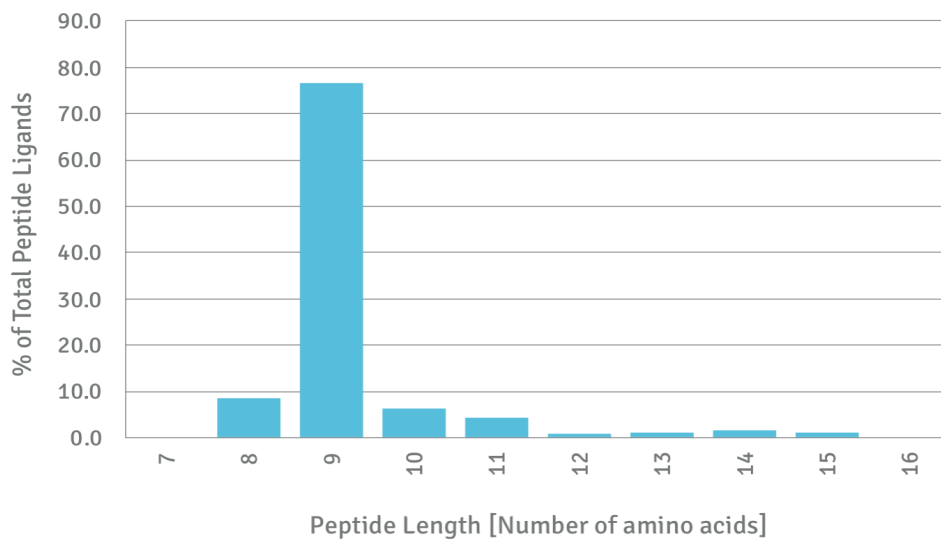
C*03:03 BINDING MOTIF



Length Distribution

HLA Length Distribution

C*03:03



Please note:

ALL PRODUCTS ARE FOR RESEARCH USE ONLY. NOT FOR COMMERCIAL USE IN DIAGNOSTIC PROCEDURES.

For more information, please visit our Policies section on our website. For licensing inquiries, please contact

licensing@hlaprotein.com

